

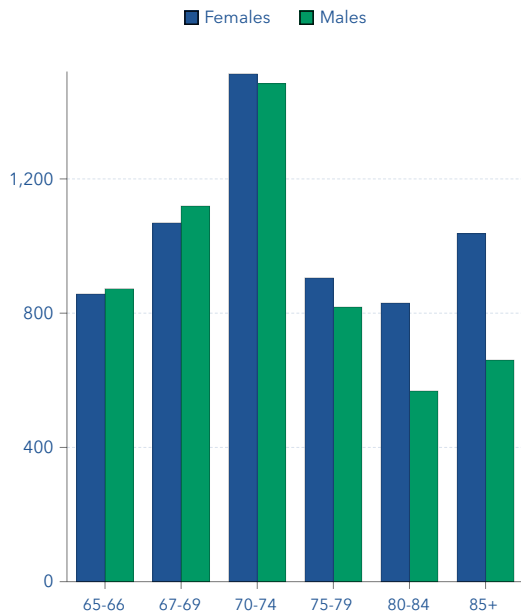


COUNTY COVID-19 IMPACT PLANNING REPORT

Oxford County, Maine (FIPS 23017)



POPULATION 65 AND OLDER



esri THE SCIENCE OF WHERE Source: Program Areas

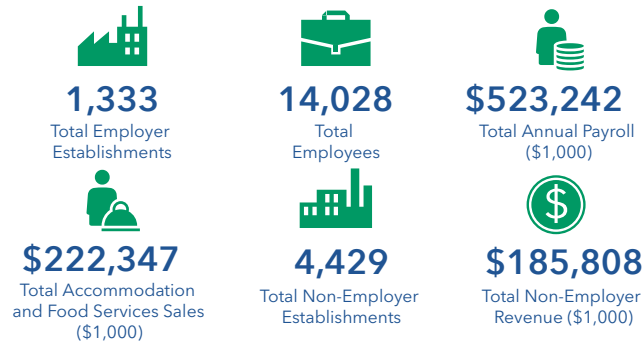
LANGUAGE SPOKEN AT HOME BY AGE	5-17	18-64	65+	Total
English Only	7,973	33,833	11,315	53,121
Spanish	33	220	18	271
Speak English "very well"	33	187	3	223
English less than "very well"	0	33	15	48

<https://covid19.census.gov>

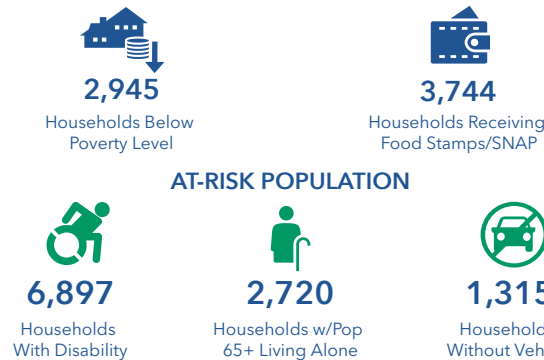
KEY FACTS

57,325 Total Population 20,814 Total Households 2.72 Average Household Size 46.6 Median Age 75.0% Internet At Home

BUSINESSES

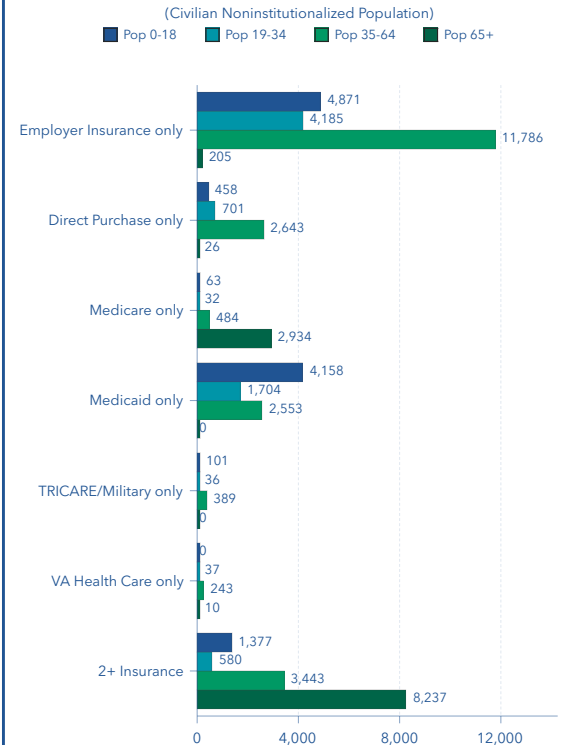


POVERTY



AT-RISK POPULATION

HEALTH INSURANCE COVERAGE BY AGE



COUNTY COVID-19 IMPACT PLANNING REPORT

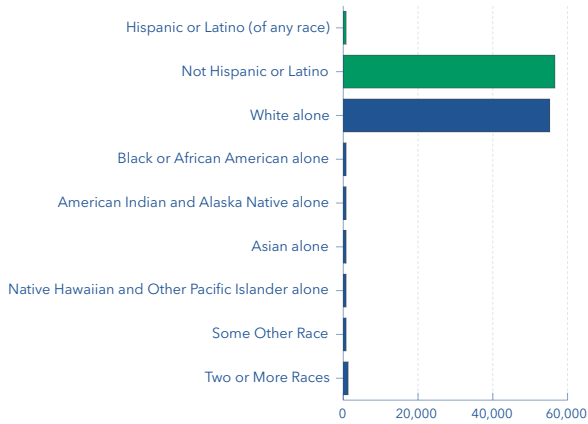
Oxford County, Maine (FIPS 23017)

KEY FACTS

57,325 Total Population 20,814 Total Households 2.72 Average Household Size 46.6 Median Age 75.0% Internet At Home

Other Indo-European	200	515	354	1,069
Speak English "very well"	195	432	279	906
English less than "very well"	5	83	75	163
Asian-Pacific Island	34	80	20	134
Speak English "very well"	29	35	8	72
English less than "very well"	5	45	12	62
Other Languages	25	44	26	95
Speak English "very well"	25	34	20	79
English less than "very well"	0	10	6	16

HISPANIC ORIGIN AND RACE



Source: Program Areas

POPULATION AND POVERTY STATUS **Total**

Population for whom Poverty Status is Determined	56,611
Income to Poverty Ratio <0.50	2,867
Income to Poverty Ratio 0.50-0.99	6,110
Income to Poverty Ratio 1.00-1.24	3,107
Income to Poverty Ratio 1.25-1.49	3,592
Income to Poverty Ratio 1.50-1.84	4,280
Income to Poverty Ratio 1.85-1.99	2,204
Income to Poverty Ratio 2.00+	34,451

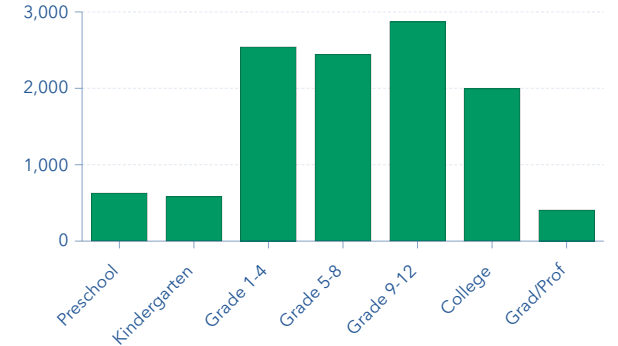
POVERTY LEVELS **Below** **At or Above** **Total**

All Households	2,945	17,869	20,814
Married-Couple Family Households	643	10,115	10,758
Other Families Hhlds w/Male Householder	263	907	1,170
Other Families Hhlds w/Female Householder	566	1,321	1,887
Nonfamily Hhlds w/Male Householder	496	2,616	3,112
Nonfamily Hhlds w/Female Householder	977	2,910	3,887

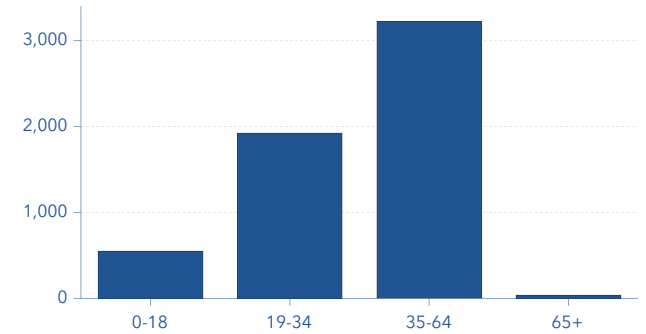
OTHER POPULATION FACTS **Total**

Population Density (per square km)	10.7
Population in Dependent Age (under 18 and 65+)	22,633
Population 65+ Living in Group Quarters	334
Average Household Size of Owner-Occupied Unit	2.72
Average Household Size of Renter-Occupied Unit	2.70

SCHOOL ENROLLMENT (AGE 3 AND OVER)



POPULATION WITH NO HEALTH INSURANCE BY AGE
(Civilian Noninstitutionalized Population)



Version 3.0
January 04, 2021